

CHAIN BRACKET TUBE HOLDER

CHAIN BRACKET TUBE HOLDER

is designed for installation of Ø60-90 mm mounting tubes in two levels as an accessory to the Chain Bracket system.

FLEXIBILITY

Together with the Cue Dee Chain Bracket the Tube Holder can be installed on any pole from Ø110 mm up to Ø1070 mm. The Tube Holder is delivered as a set with two holders.

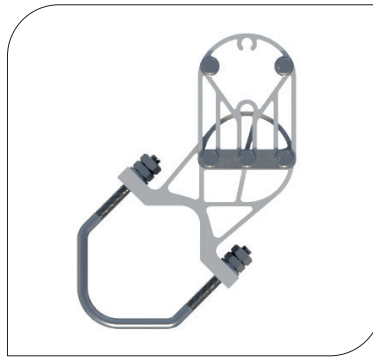
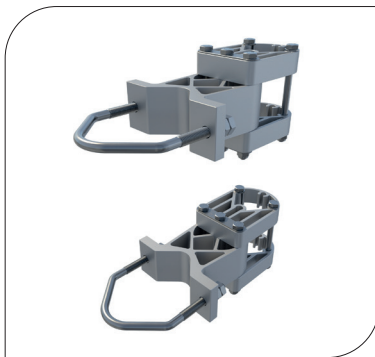
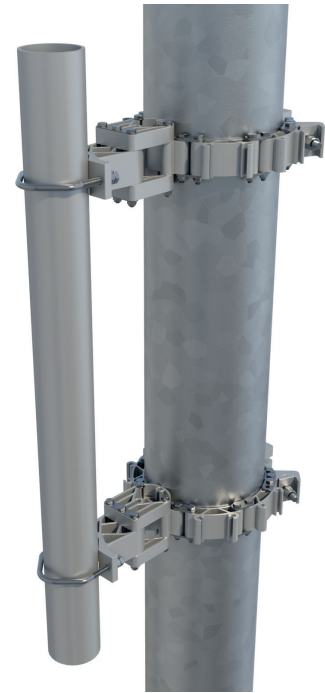
The Tube Holder is designed with adjustability in both horizontal directions; sideways and radially. This offers unique flexibility when installing and will allow for an exact vertical mounting even on conical monopoles. Since Chain Bracket is designed with several profile elements around the pole You can easily install more than one tube around the pole in the same level by just adding Tube Holders.

QUALITY

All components are made of anodized aluminum and acid proof stainless steel which gives the support excellent corrosion resistance.

EASY ASSEMBLY

Installation is very easy thanks to its flexible design and that the holder is pre-assembled at delivery.



ORDER AND TECHNICAL INFORMATION

DRAWING NO: CD 991214

FUNCTION DESCRIPTION: Tube holder for Chain Bracket in two levels for installing Ø60-90 mm mounting tubes on any pole or monopole larger than Ø110 mm. Distance between pole and mounting tube is adjustable 130-170 mm.

MECHANICAL DATA

Profiles: Aluminum, nature anodized 20µm

Plates: Acid proof stainless steel

Fasteners: Acid proof stainless steel

PERFORMANCE

OPERATIONAL WIND SPEED

km/h	m/s	mph
240	67	150
210	58	130
180	50	112
150	42	93
120	33	75

MAX SIDE WIND AREA

m ²	ft ²
0,4	4,3
0,5	5,5
0,7	7,5
1,0	11
1,5	16

MAX LOAD WEIGHT

kg	lb
150	330
150	330
150	330
150	330
150	330

PACKAGE DIMENSIONS

LENGTH	WIDTH	HEIGHT	WEIGHT
285 mm (11,2 in)	145 mm (5,7 in)	150 mm (5,9 in)	2,9 kg (6,4 lb)